

**Arizona Department of Health Services  
Office of Infectious Disease Services  
2009 Pandemic Influenza A (H1N1) Virus Update  
July 1, 2009**

Updated as of 07/01/2009 12:00 pm

*Arizona*

Summary of Case and Epidemiologic Information

---

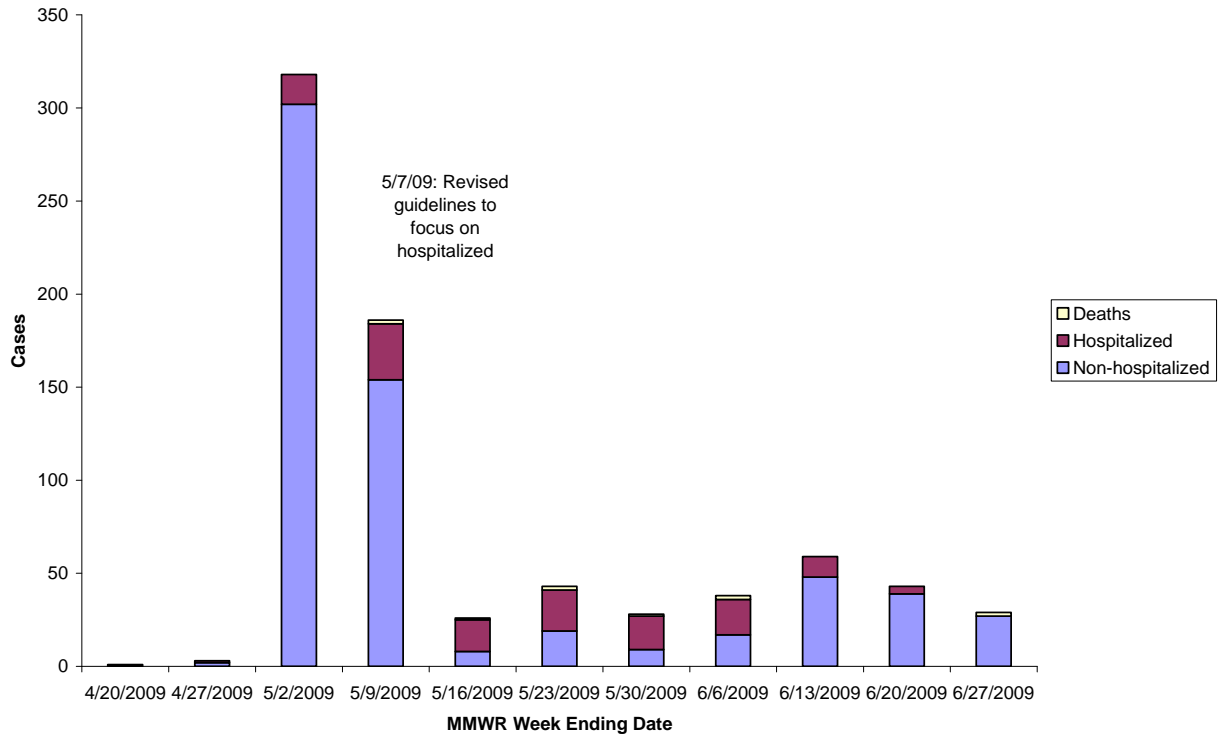
	<b>Confirmed</b>
<b>ARIZONA</b>	<b>761</b>
Apache	3
Cochise	2
Coconino	11
Gila	2
Graham	5
Greenlee	
La Paz	1
Maricopa	422
Mohave	3
Navajo	12
Pima	150
Pinal	95
Santa Cruz	8
Yavapai	2
Yuma	45

---

	<b>Total Confirmed Cases (N=761)</b>	<b>Hospitalized Cases (N=146)</b>	<b>Confirmed Deaths (N=10)</b>
<b>By Gender:</b>			
Female (number & percent)	371 (51%)	72 (50%)	6 (60%)
Male (number & percent)	356 (49%)	70 (48%)	4 (40%)
<b>By Age:</b>			
Range	10 Days – 84 Years	10 Days – 77 Years	1 Year – 63 Years
Mean	20 Years	27 Years	31 Years
Median	14 Years	20 Years	23 Years
<b>By Age Group:</b>			
Aged 0 to 4 years	90 (12%)	36 (25%)	1 (10%)
5 to 24 years	468 (62%)	45 (31%)	4 (40%)
25 to 49 years	134 (18%)	31 (21%)	2 (20%)
50 to 64 years	54 (7%)	25 (17%)	3 (30%)
65 years or older	15 (2%)	9 (6%)	0 (0%)
<b>By Race:</b>			
American Indian or Alaskan Native	88 (12%)	18 (12%)	2 (20%)
Asian or Pacific Islander	0 (0%)	0 (0%)	0 (0%)
Black or African American	11 (1%)	6 (4%)	1 (10%)
Hispanic or Latino	173 (23%)	31 (21%)	1 (10%)
White Non-Hispanic	52 (7%)	16 (11%)	0 (0%)
Other or Unknown	437 (57%)	75 (51%)	6 (60%)

---

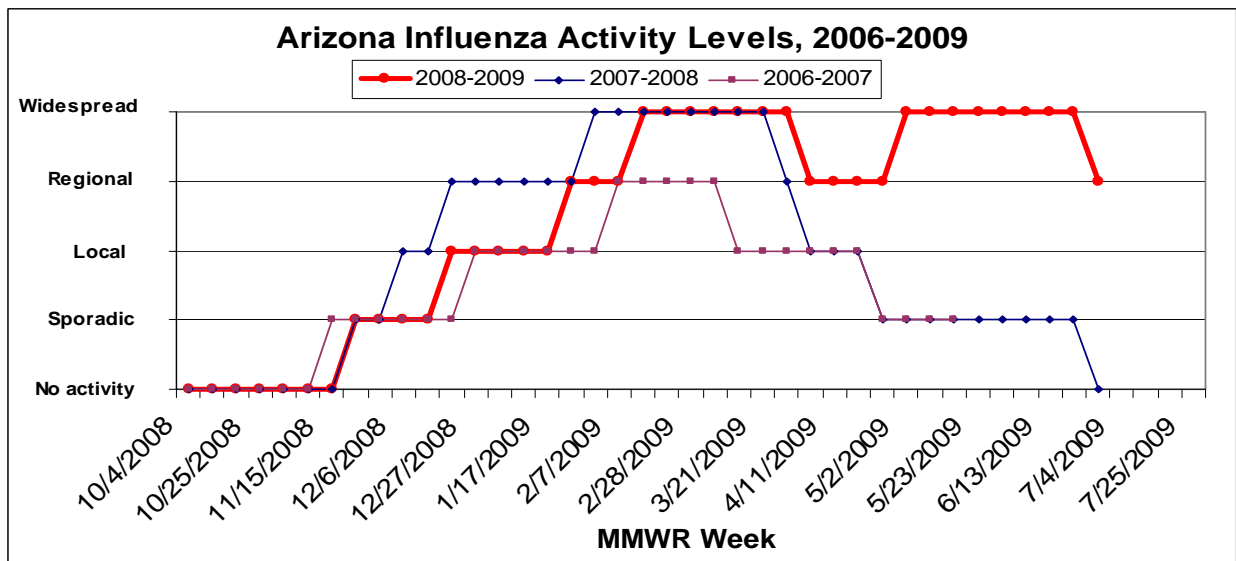
**Pandemic H1N1 Flu Cases by Specimen Collection Date, 2009**



Special Populations

Of the confirmed cases of pandemic influenza H1N1 described above, 8 are healthcare workers and 16 pregnant women. Cases in these populations were identified and investigated by local health departments and ADHS, especially early in the outbreak, to learn more about transmission and effects of this strain.

Seasonal/Pandemic Influenza Activity

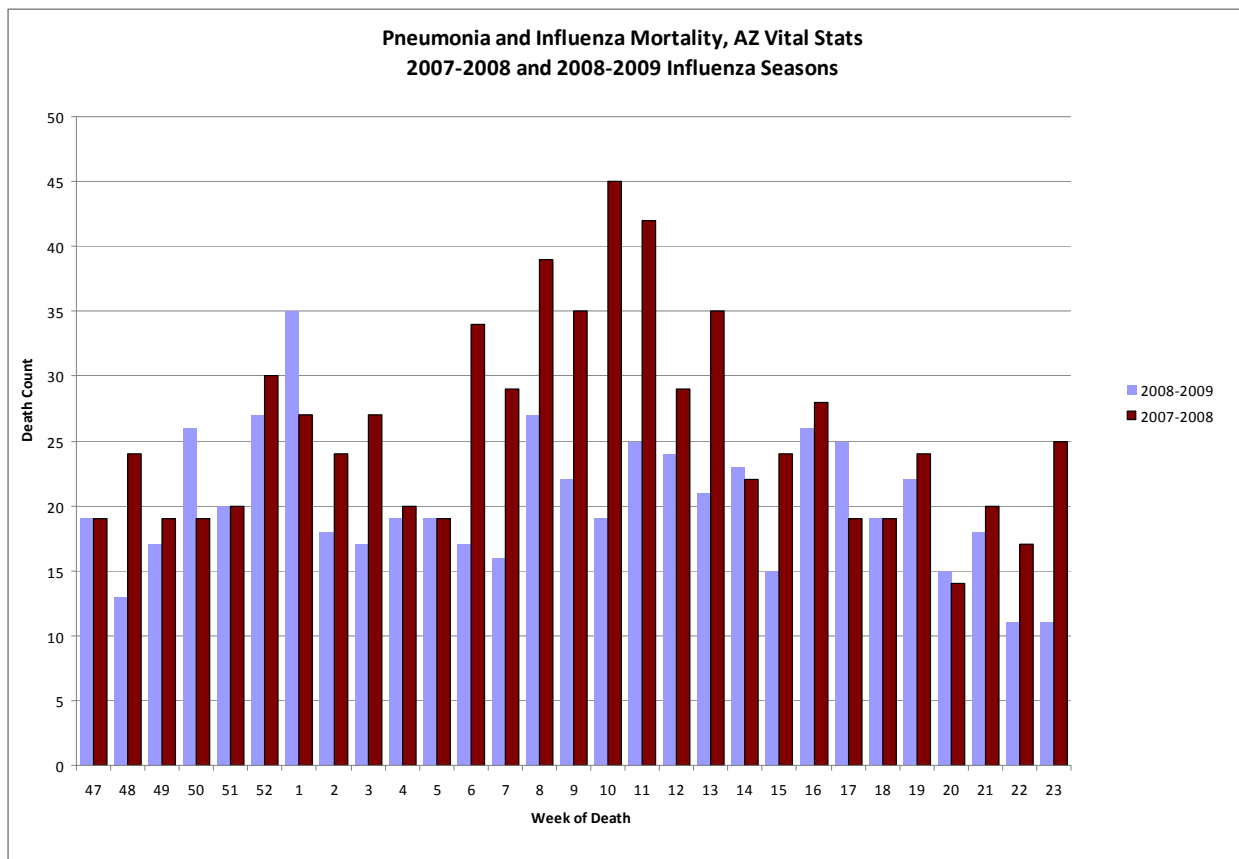


Laboratory Data (Based on Date Received at the Arizona Public Health Laboratory)

	<b>*Last 7 Days</b>	<b>*Last 21 Days</b>	<b>*Since 4/20/2009</b>
<b>Total Number of Specimens Received</b>	102	258	2,600
<b>Pandemic Influenza A(H1N1)</b>	48 (47%)	143 (55%)	771 (30%)
<b>Seasonal Influenza A(H1)</b>	0 (0%)	0 (0%)	186 (7%)
<b>Seasonal Influenza A(H3)</b>	0 (0%)	3 (1%)	349 (13%)
<b>Seasonal Influenza B</b>	0 (0%)	8 (3%)	242 (9%)
<b>Negative</b>	35 (34%)	82 (32%)	774 (30%)
<b>Pending</b>	19 (19%)	19 (7%)	32 (1%)
<b>Rejected</b>	0 (0%)	3 (1%)	246 (9%)

\*Data was last updated on 6/29

Mortality Data (Based on Data from Arizona's Vital Statistics Office)



\*Data was last updated on 6/18

**Resources**

ADHS Swine Flu Webpage: <http://www.azdhs.gov/phs/oids/epi/flu/swine/index.htm>

CDC Swine Flu Webpage: <http://www.cdc.gov/swineflu/>